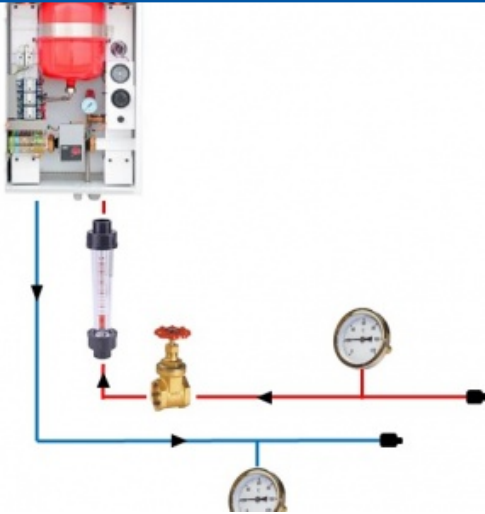


REFERENCE : MP2023



Non contractual photo

**SERVICE : 400V TRI OR 230 V MONO - 50 HZ
- 6 KW MAINS WATER
DIMENSIONS : 1000 X 850 X 1650 MM**

WEIGHT : 85 KG

The bench makes it possible to study an electric boiler without rejection of smoke and without the use of fuel. It includes all the instruments for the study of hydraulic production and electricity consumption.

Educational Objectives :

- To observe, handle, assemble and disassemble components.
- To measure and evaluate characteristics (temperatures, flow ...).
- To reproduce industrial diagrams.
- To understand and interpret the mechanical, electrical, aerologic operations ...

Technical specifications :

The structure of the welded 304L stainless steel 25x25 mm frame gives it robustness allowing it to be used in schools. The chassis is mounted on casters, two of which have brakes.

The pilot is made up of different parts:

- A 6kW boiler with :
 - MO heat-insulated all copper heating body
 - Immersion heaters on flanges
 - Adjustable speed circulator
 - 8 liter expansion vessel
 - Safety valve with pressure gauge
 - Thermometer
 - Aquastat 0/90 ° (R) or 0/50 ° (BT)
 - Thermal safety device with manual reset 95 ° (R) or 60 ° (BT)
 - Pressure switch (water shortage safety)
 - Silent Contactor Relays
 - Progressive switching on by timers
 - Terminal block
 - Regulation terminal block
 - 2nd stage load shedding terminals
- A regulating valve
- A 100-1000 L / h flowmeter
- Two temperature indicators with 0-120 ° C dials at the inlet and outlet of the system
- Copper piping
- Self-sealing quick couplings
- Two flexible pipes with self-sealing connection
- An IP55 electrical box with:
 - On / off button
 - Emergency stop button
 - Consumed energy meter