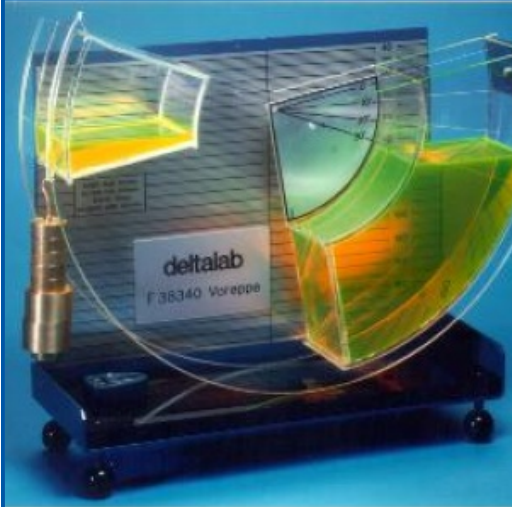


STUDY APPARATUS OF THE CENTER OF THRUST



Non contractual photo

SERVICE :

DIMENSIONS : 430 X 150 X 330 MM

WEIGHT : 5,9KG

REFERENCE : EH25

The EH25 thrust center study device makes it possible to directly determine the moment due to the thrust of a liquid on a flat plate, totally or partially immersed, and to compare the results obtained by the calculation. The flat plate can be inclined relative to the vertical, which allows to study the general case.

The water is contained in a plexiglass quadrant. The geometric axis of the curved faces coincides with the arm of the flail against which the moment is measured. This moment is simply measured by means of masses fixed on one arm. The head of the water is measured directly on the transparent scale of the unit. The reading is 0.5 mm. The device comes with a technical bulletin that presents typical experimental results.

Possible experiences :

- Measuring the thrust center of a vertical flat surface at different heights of immersion
- Measurement of the center of thrust in the general case of a flat surface with different inclinations and immersion heights

Technical specifications :

- Fixed scale:
- Indicates the horizontal and vertical axes passing through the flail.

Leverage

The apparatus is supplied complete with the plate, the weight hook and the series of masses.